



Early Years Services Central Australia

Elizabeth Flynn
Initiatives Manager
Communities for Children

Alice Springs – ABS Data

Central Australia

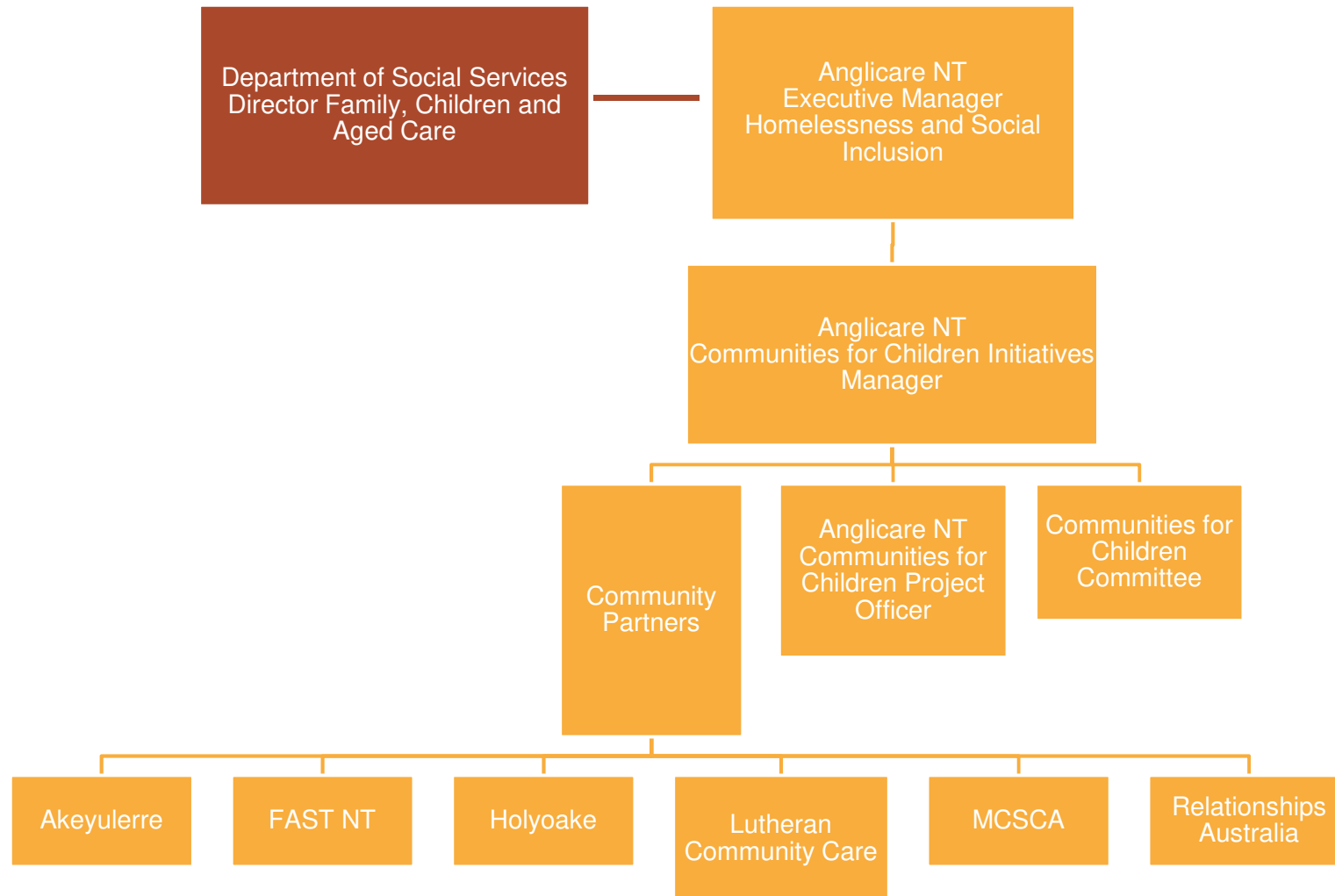
- ▶ Aboriginal 36.2%
- ▶ 0-4yo 8.1%
- ▶ Preschool Attendance 4.1%
- ▶ Median weekly income \$1513
- ▶ <\$600p/w income 16%

National

- 2.5%
- 6.6%
- 5.1%
- \$1234
- 23.7%



Communities for Children Governance Structure



Communities for Children – Priorities

1. Strong & Healthy Young Families
2. Early Learning
3. School Transition & Engagement
4. Creating Strong Child-friendly Communities



Communities for Children Alice Springs Activities

- ▶ **Akeyulerre:** Ingkenteme Arrernte Cultural Education Program
- ▶ **FAST NT:** Baby FAST & Kids FAST
- ▶ **Holyoake:** Sandplay Therapy for Children
- ▶ **Lutheran Community Care:** Kwatja Etatha – Parents and Families Learning Together & Circle of Security
- ▶ **MCSCA:** Susu Mamas Playgroup
- ▶ **Relationships Australia:** Holding Children Together



Facilitating Partner Recent Activities

- ✓ **Trauma Informed Practice Group:** Currently running a series of four sessions
- ✓ **Child Protection Week:** Family Fun Day @ Kwatja Etatha
- ✓ **Children's Week :** Gala Dinner, Family Afternoon of Fun and Art & Photography Exhibition
- ✓ **Anti-Poverty Week:** Interagency Cook-off
- ✓ **Pre-Birth-4yo Collective Impact**
- ✓ **Parenting Network:** Parenting Support Service Spreadsheet
- ✓ **Service Directory:** Will soon be published online. Available in a draft hard copy at the Anglicare Stall

Stronger Communities for Children

Remote Central Australia

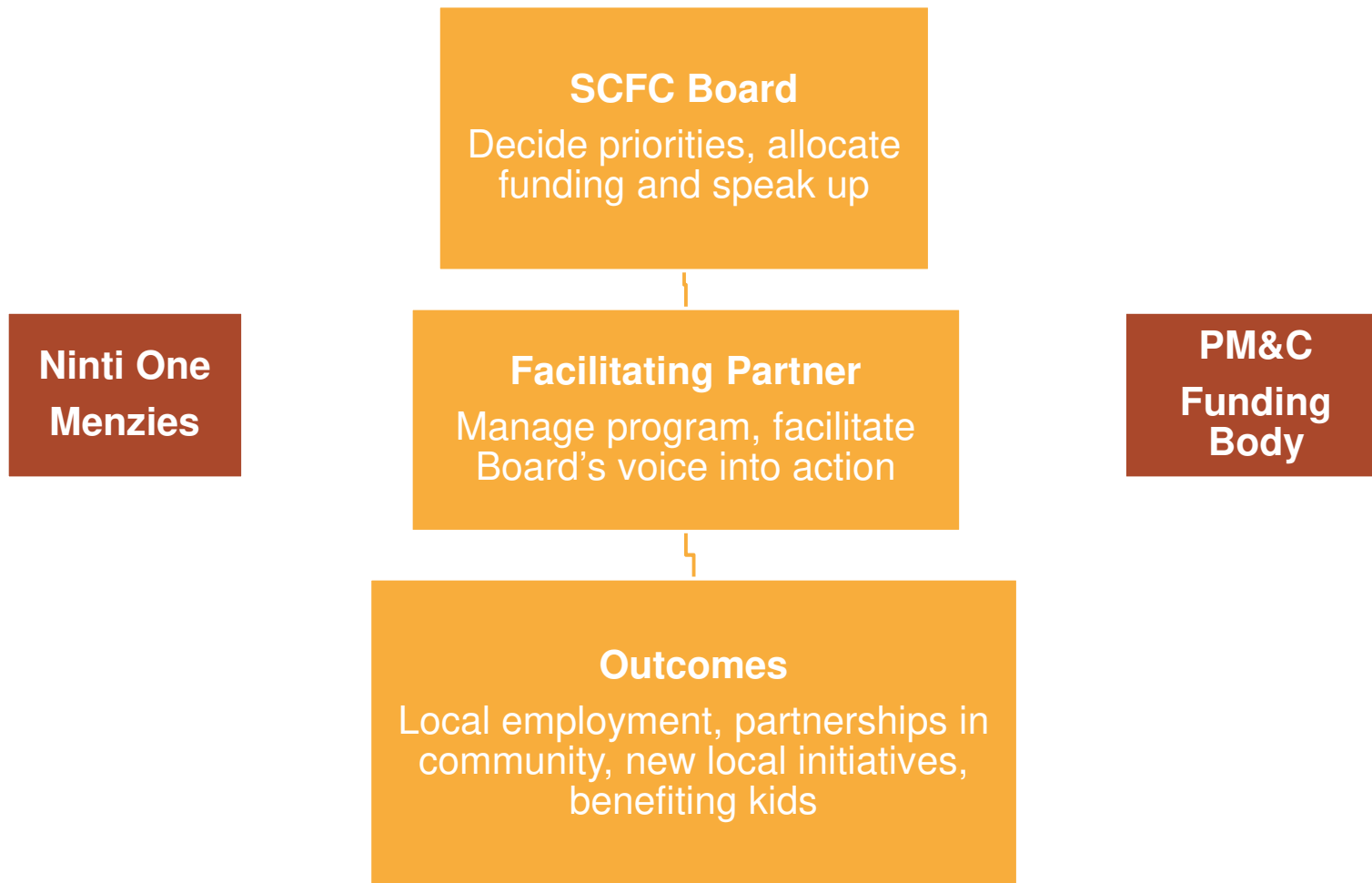
10 sites
in NT

Community
Ownership

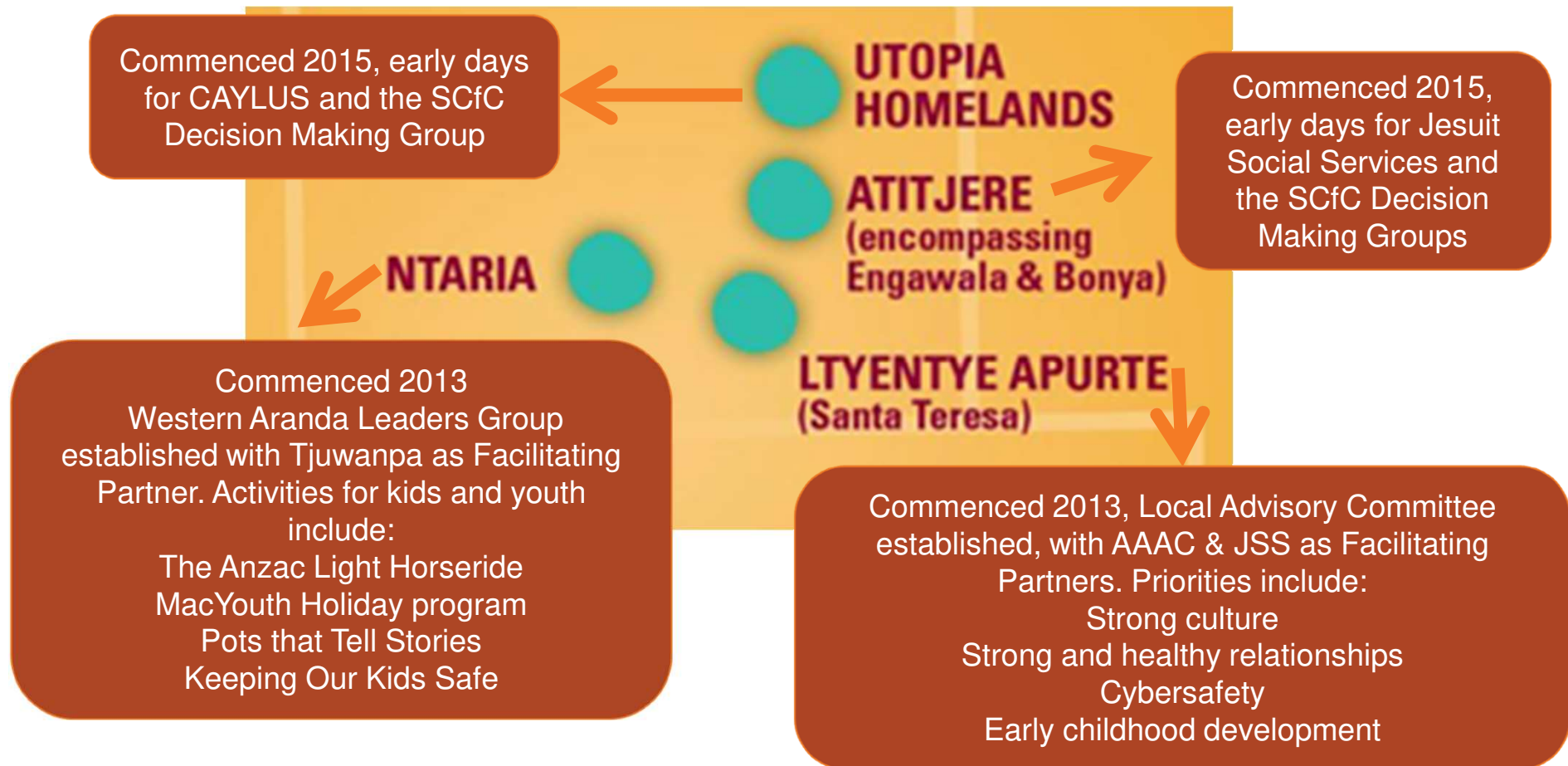
Evidence
and
Experts



Stronger Communities for Children Governance Structure



Whats happening in SCfC in Central Australia?



For any questions about SCfC in Central Australia, please feel free to contact:

Jorge Basave – Jesuit Social Services
Jorge.basave@jss.org.au

Annie Kennedy – Tjuwanpa
annie.kennedy@westnet.com.au

Blair McFarland – CAYLUS
blair@caylus.org.au

Beth Woodward – Ninti One
beth.woodward@nintione.com.au

